

Bⁿ BIP BN BIP



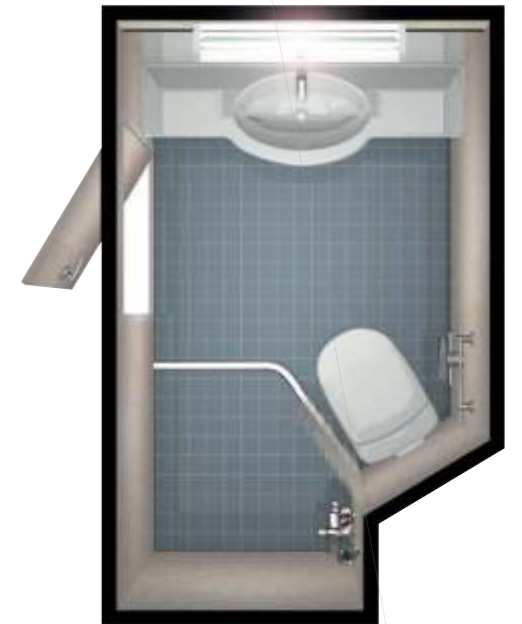
Bⁿ BIP

35, Sozoo-dong, Yangsan-si, Gyeongnam, Korea
Tel. +82-55-380-5000 Fax. +82-55-389-2010



BN BIP

BN BIP





&

S.
B.
C.



T -A :1350 1650



T -B :1200 1800



T -C :1200 1800



T -D :1200 1200



T -L :2000 1500



T -P :1300 1200

No.	No	S	B	C		
1	0.6 +15 :30 BIP W-161	9.6	2	1	1	1
2	0.6 +15 :30 BIP C-161	9.6	2	1	1	1
3	3.2 (75 75 5t) BIP Standard	47.8	2	1	1	1
4	: :580 BIP Standard	55.8	-	1	1	1
5	: BIP Standard	-	-	1	1	1
6	: BIP Standard	20.0	-	1	1	1
7	: BIP standard	5.1	-	1	1	-
8	AC220 -15 -50 BIP standard	2.0	-	1	1	1
9	4- S-204	-	-	1	1	1
10	0.6/1KV, 3 * 1.5 2 -	-	-	1	1	1
11	12.0 (O.D) -	-	-	1	1	1
12	-	-	2	2	2	-
13	40A STPG # 40 -	-	-	1	1	1
14	(= 100) () KU-100	0.6	-	1	1	1
15	BIP Standard	-	-	1	1	-
16	M : (ABS) BIP Standard	3.5	-	1	1	-
17	Ma : BIP Standard	0.4	-	1	1	1
18	Ma : BIP Standard	0.3	-	2	2	1
19	M : BIP Standard	0.4	-	1	1	1
20	Ma : BIP Standard	0.4	-	1	1	-
21	Ma : BIP Standard	0.3	-	1	1	1
22	Ma : BIP Standard	0.1	-	1	1	1
23	Ma : BIP Standard	0.2	-	1	1	1
24	a Ma : FRP BIP Standard	-	-	1	-	-
25	4 :5t * 400 *600 BIP Standard	5.5	-	-	-	1
26	Ma : BIP Standard	0.9	-	-	-	1



: 0.6
: 510 , : 2400

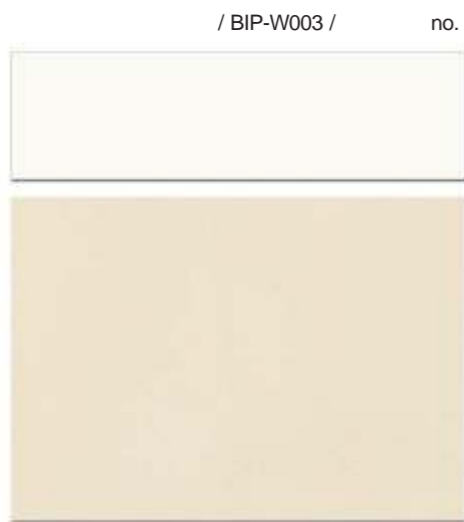
T	no					
	W-161	30	B-0	12 / ²	STC 29	1.62 / ² ℄
	W-162	45	B-15	15 / ²	STC 29	0.81 / ² ℄
	D-163	50	B-15	19.2 / ²	STC 39 RW 42	0.52 / ² ℄
	W-163	M .80	B-15	24 / ²	STC 44	0.48 /m ² ℄
	W-161 + W151S	M .70	-	-	41	-

: 0.6
: 510 , : 2400

T	no					T
	C-161	30	B-0	12 / ²	STC 52	1.62 / ² ℄
	C-162	45	B-15	15 / ²	STC 53	0.81 / ² ℄
	C-163	30	B-15	12 / ²	-	1.62 / ² ℄

Model no.														
		ABS	DNV	GL	KR	LR	NK	RMRS	RINA	JG	TC	USCG	BV	
BIP W-161	B-0													
BIP W-162	B-15													
BIP D-163	B-15													
BIP W-163	B-15													
BIP C-161	B-0													
BIP C-162	B-15													
BIP C-163	B-15													





/ BIP-W003 / no. 0.6G 9.1/1.2

/ BIP-6295



/ no. 4.5YR 3.7/2.9

/ BIP-6295



(5x75x75) / no. B2()



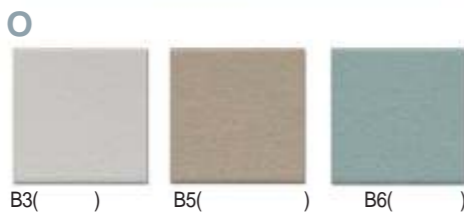
/ SW-01()



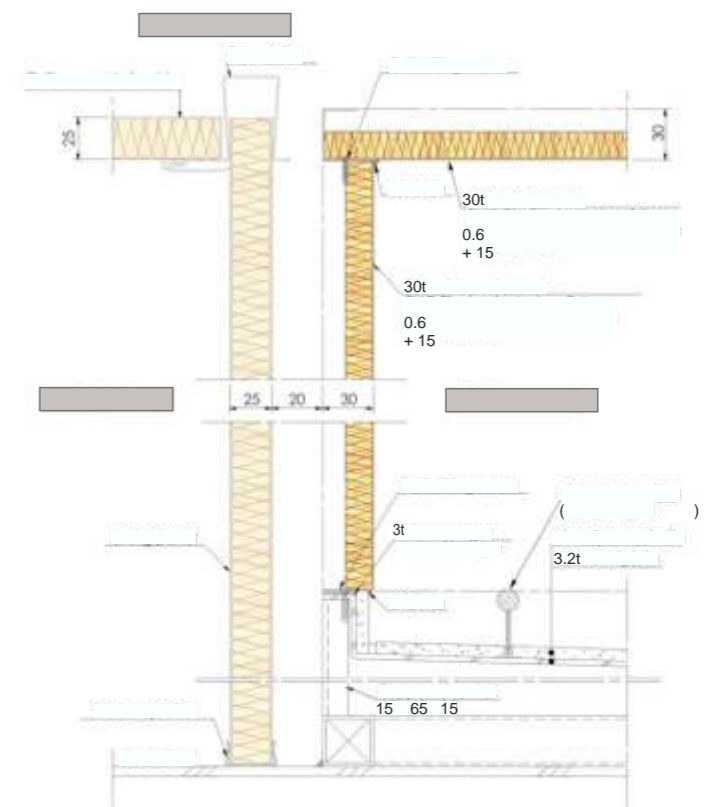
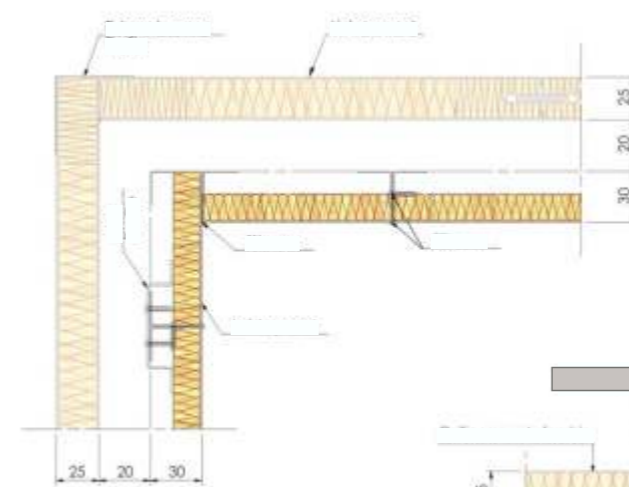
SW-02()

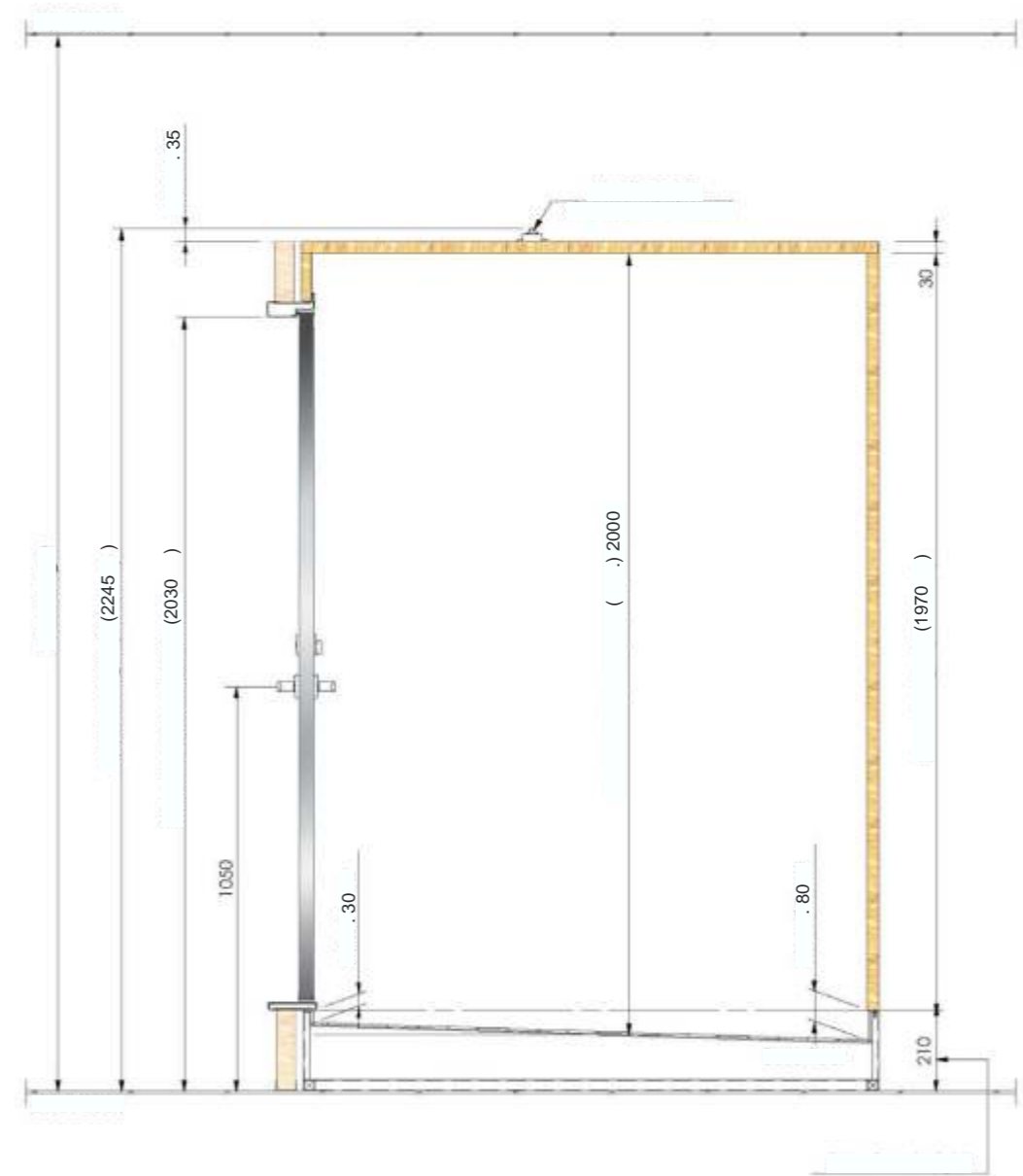
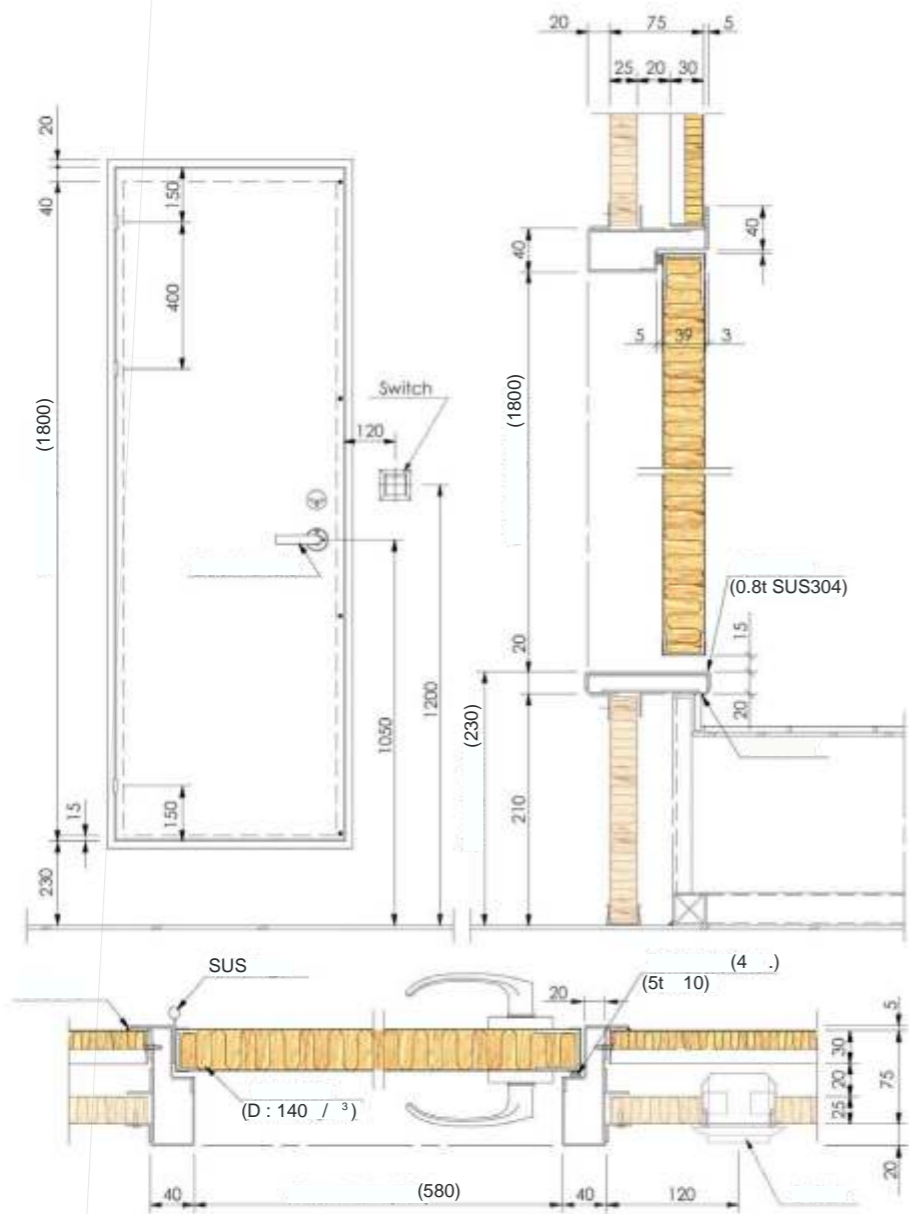


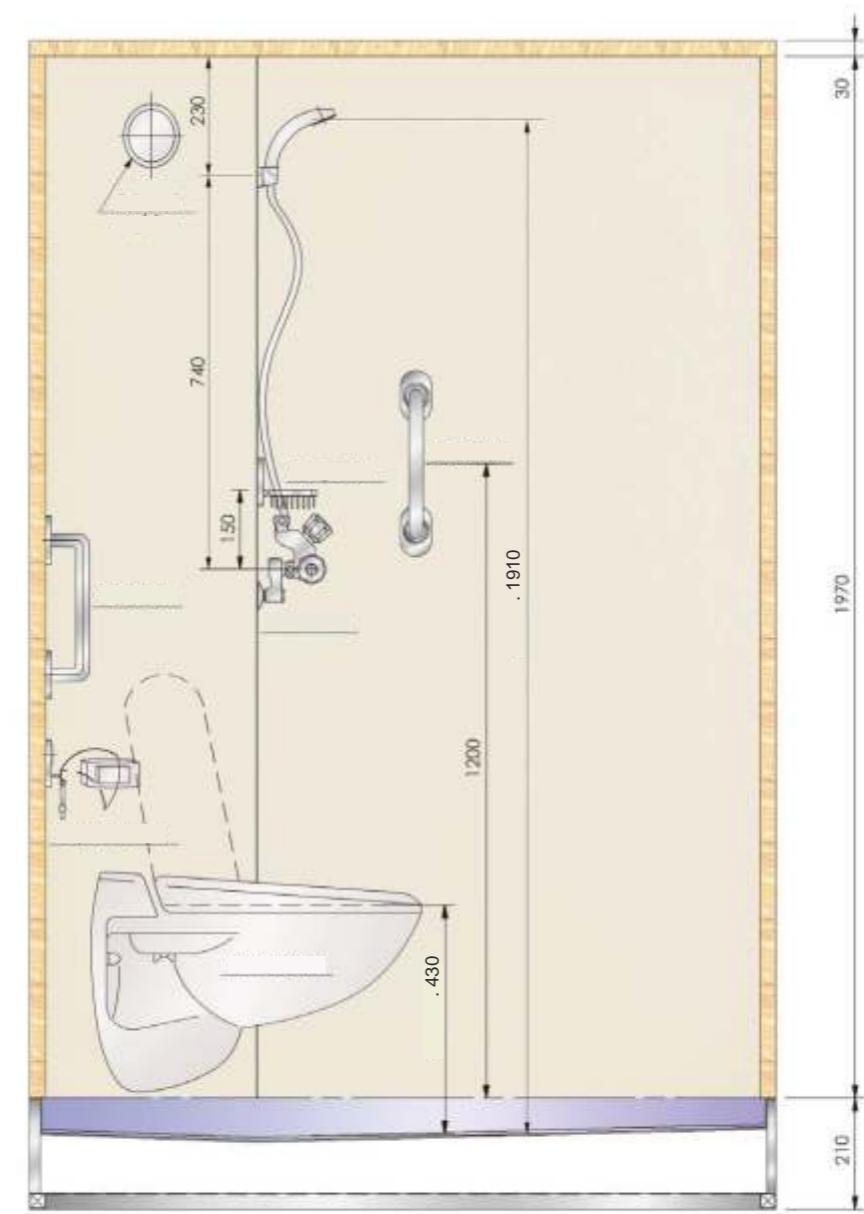
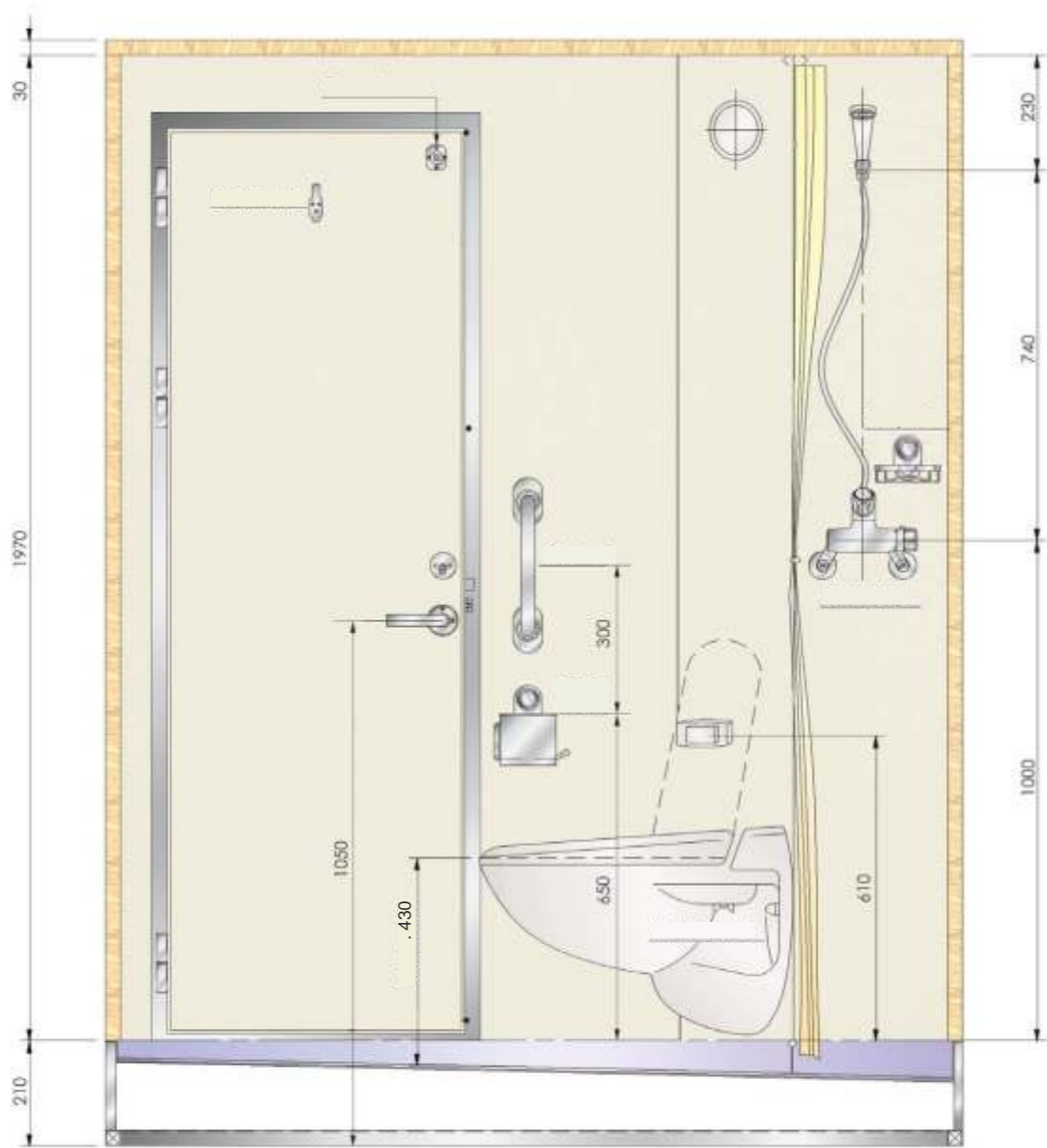
SW-03()

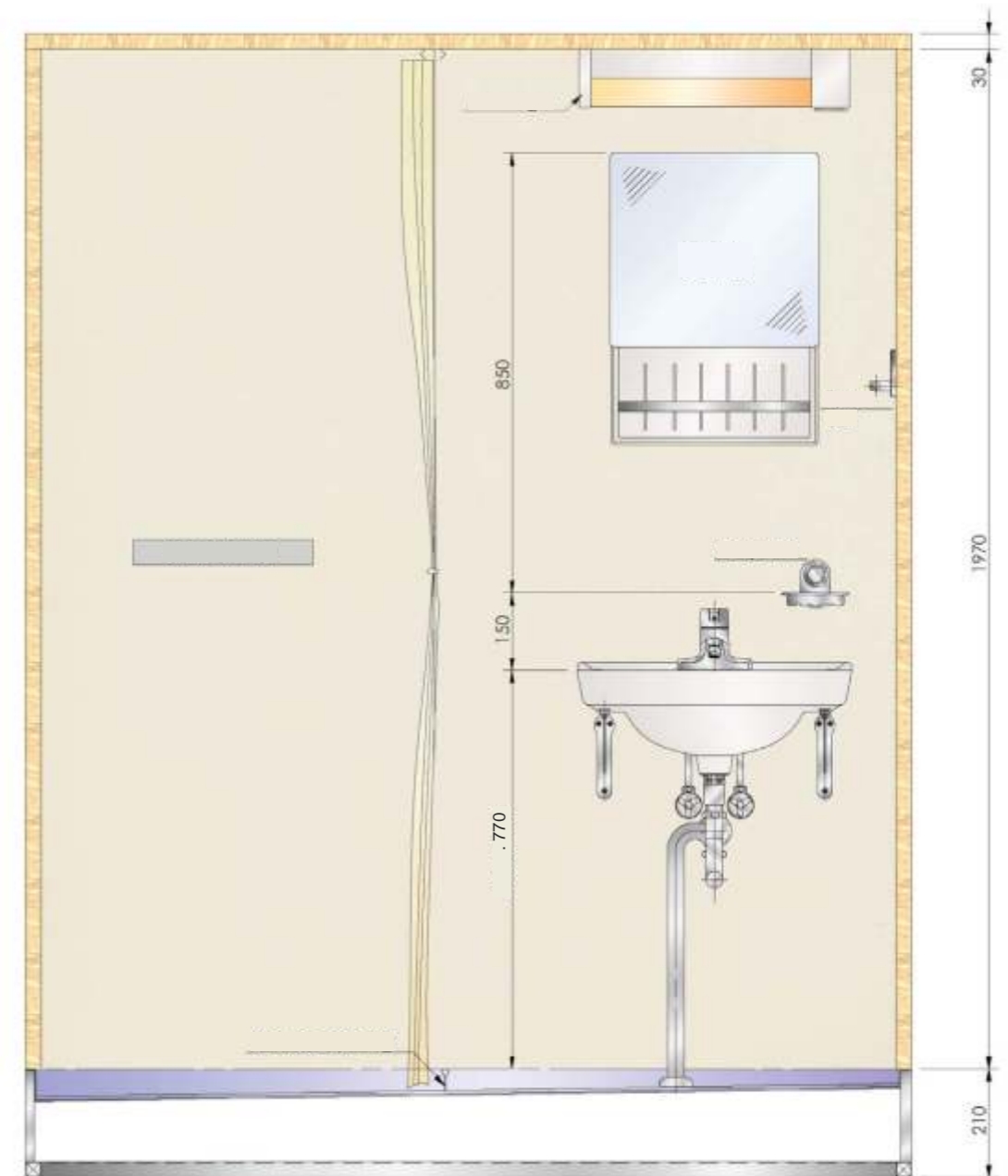
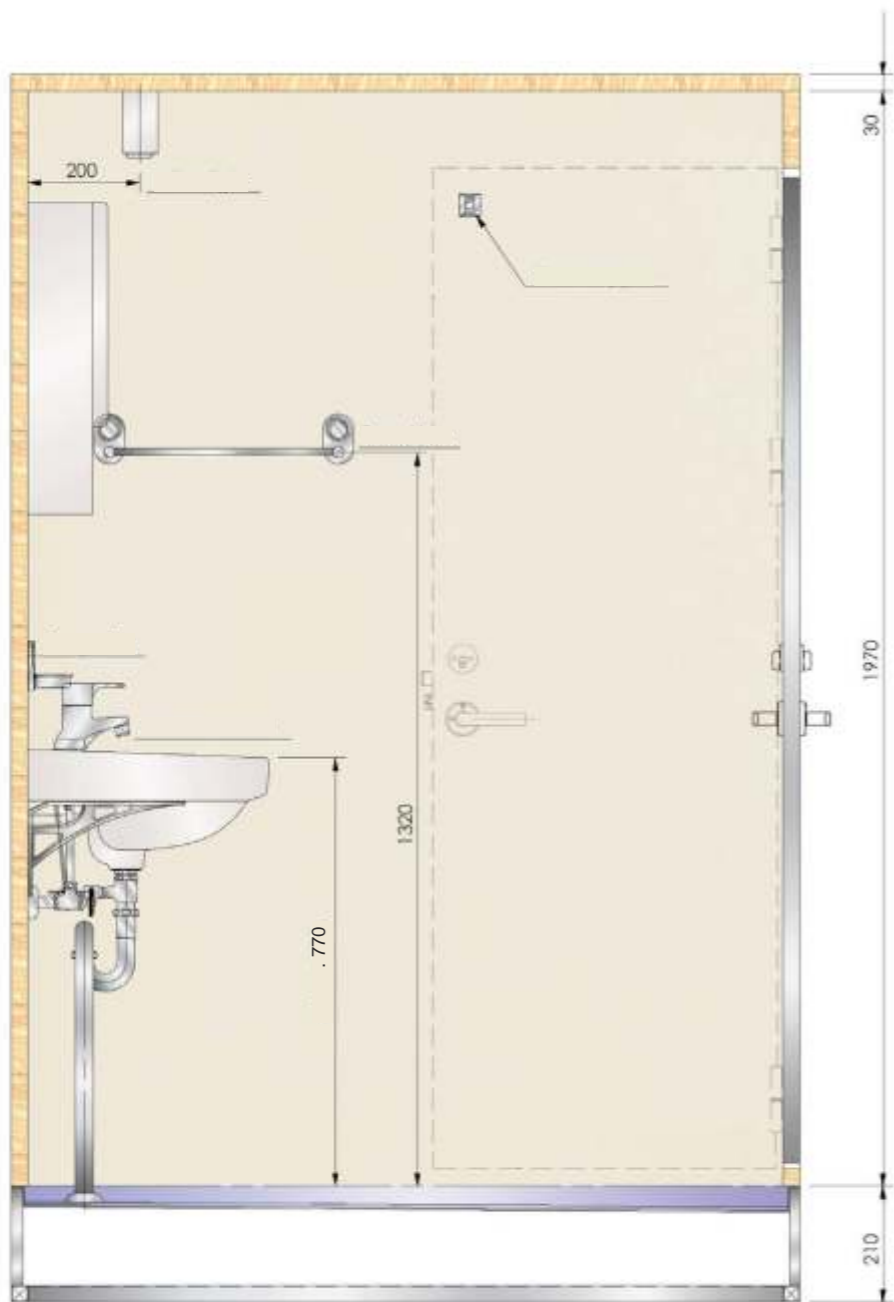


B3() B5() B6()









01



02



03



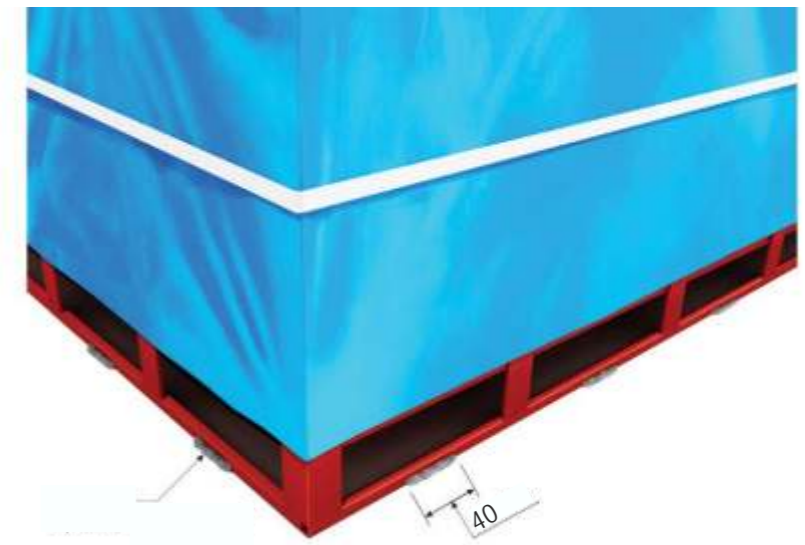
04



05.



07.



06.



08.



