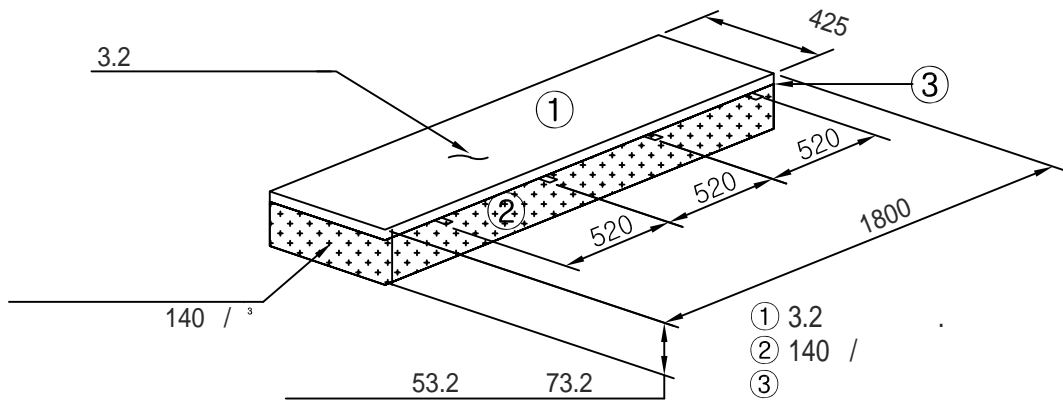


1.

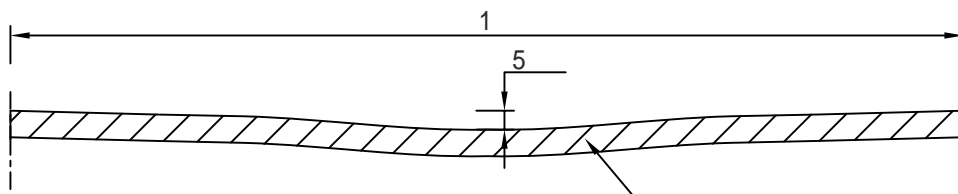
-60

53.2(t) x 1800 x 435
73.2(t) x 1800 x 435



2.

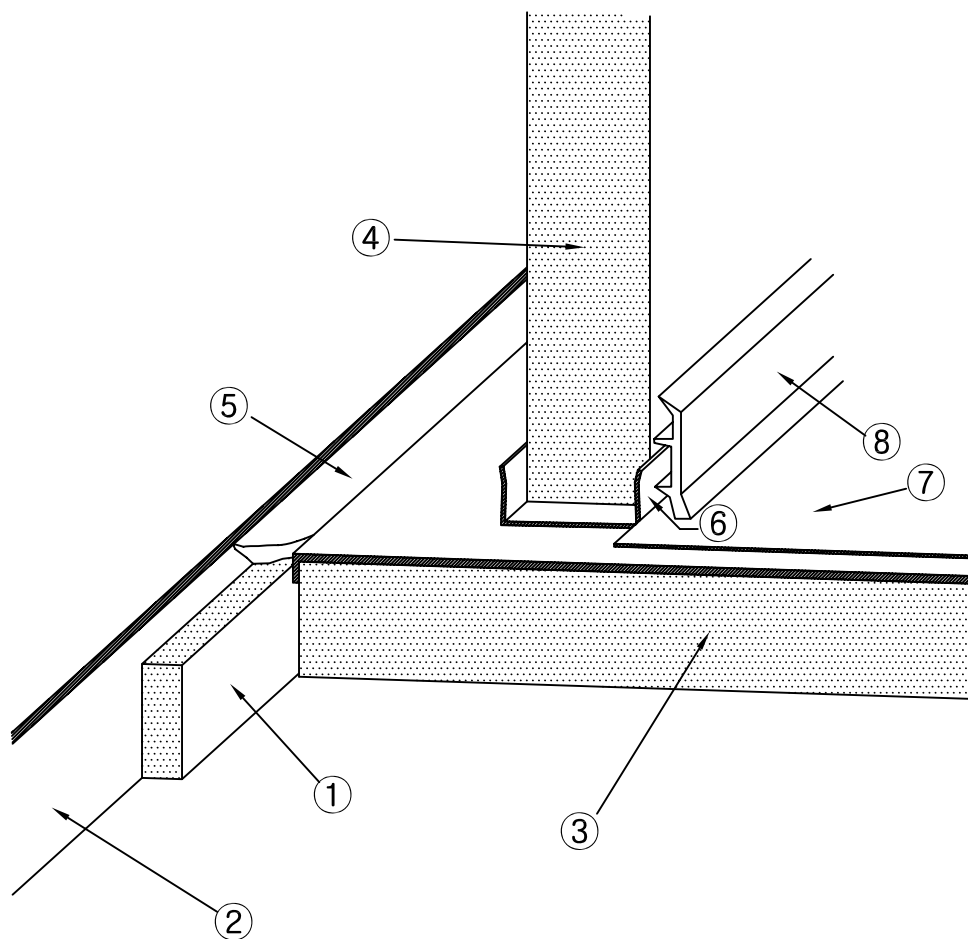
3.



4.



5.



①

②

③

④

⑤

⑥

⑦ PVC

⑧

6.

(1)

10

①

(2)

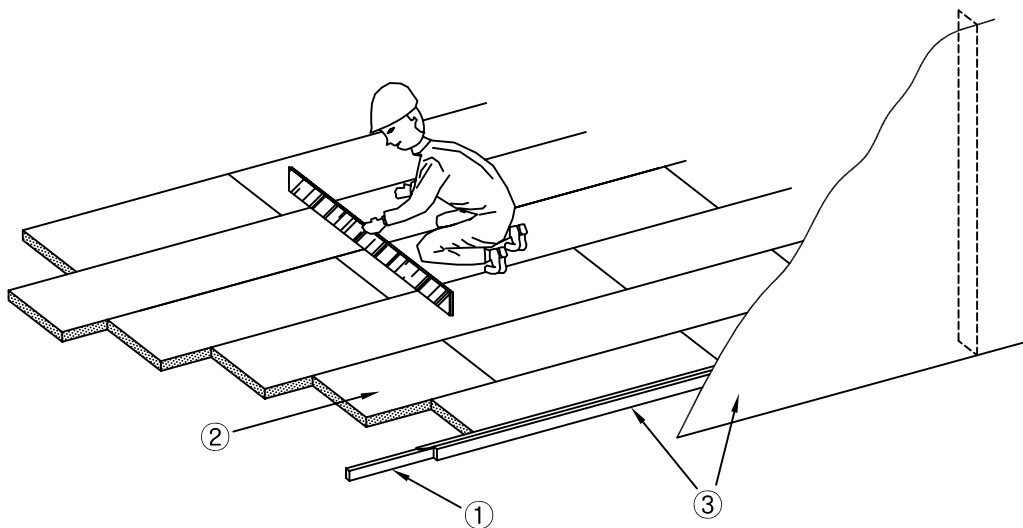
②

(3)

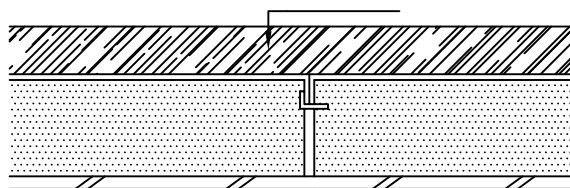
(4)

1/3,

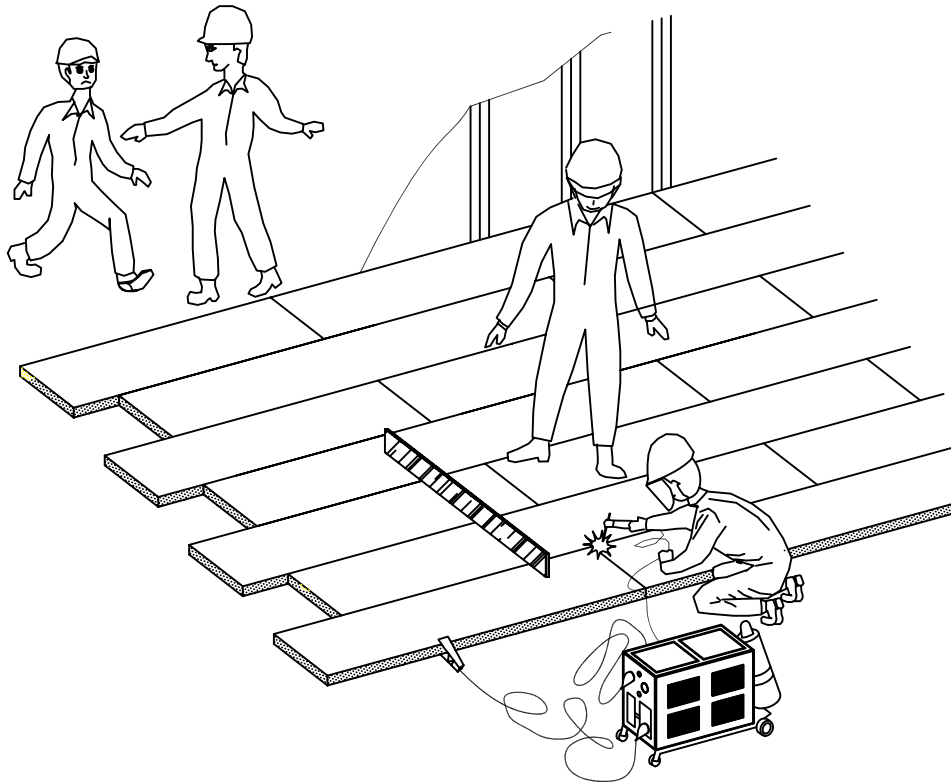
(5)



(6)



-
(1)



(2) -

(3)

425

(4)

NO. (8)

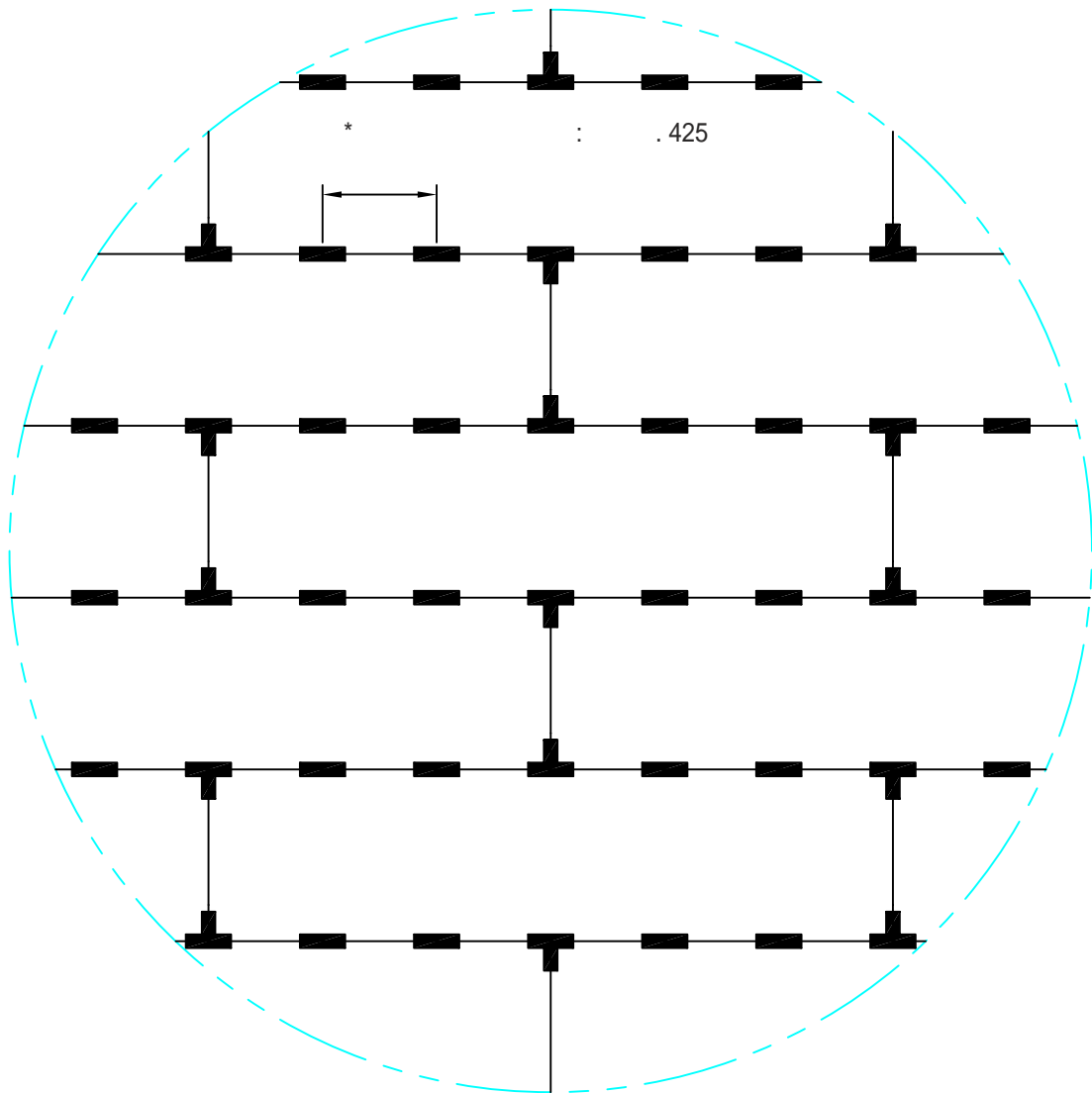
(5)

10

(7)



(8)

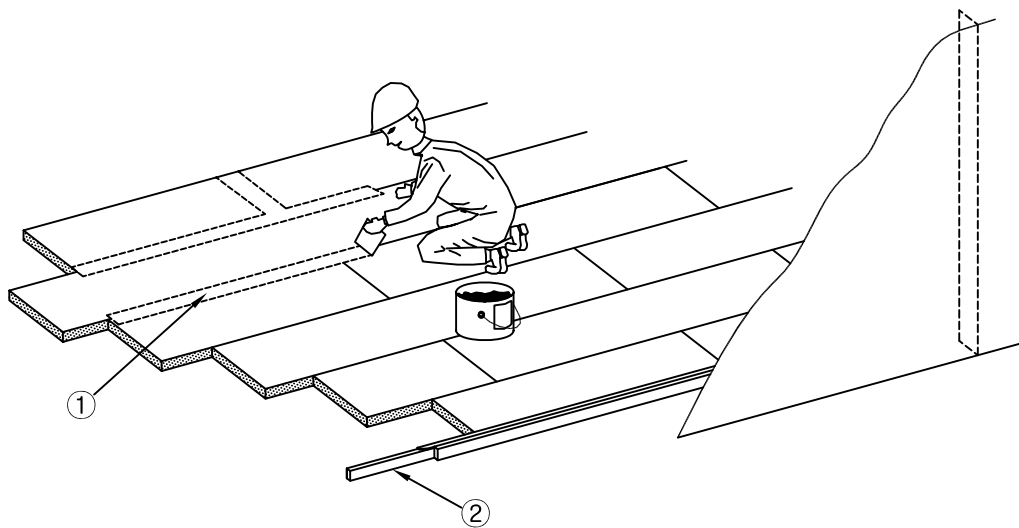


-

(1)

(2)

②



(3)

C

(4)

